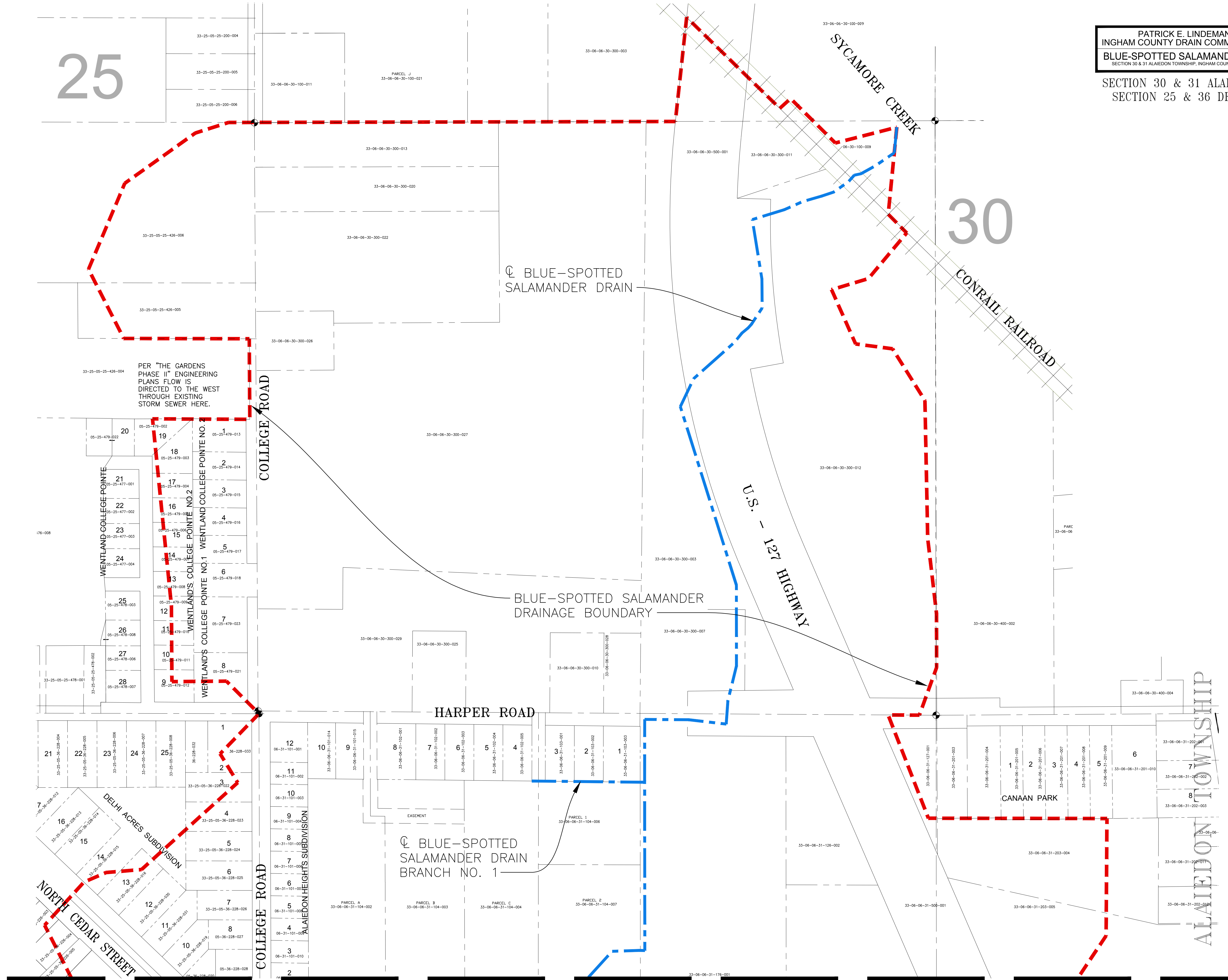
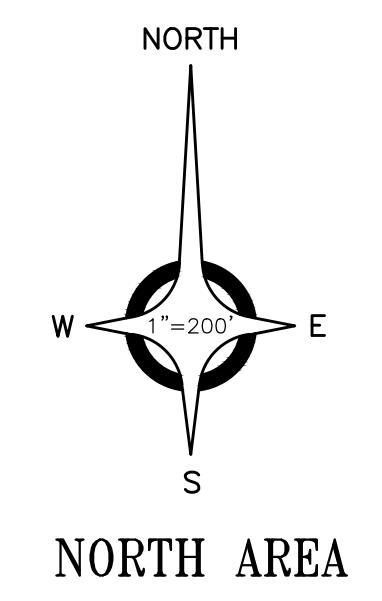


25

PATRICK E. LINDEMANN
 INGHAM COUNTY DRAIN COMMISSIONER
 BLUE-SPOTTED SALAMANDER DRAIN
 SECTION 30 & 31 ALAIEDON TOWNSHIP, INGHAM COUNTY, MICHIGAN

ANDERSON, ECKSTEIN
 AND WESTRICK, INC.
 Civil Engineers • Surveyors • Architects
 Engineers • Planners • Community
 5121 Schaefer Road, Sault Ste. Marie, Michigan 49783
 Phone: 504.728.1234 Fax: 504.728.8700 www.aewi.com

SECTION 30 & 31 ALAIEDON TOWNSHIP, INGHAM COUNTY
SECTION 25 & 36 DELHI TOWNSHIP, INGHAM COUNTY



M:\0248\0248-0002\DWG\CON\ENR\BESS\DISTRICT BDY\ICDC\WEBPLOT.DWG Layout: 01_District ICDC Website (North) 11/29/2016 2:02:01 PM

MATCH LINE (SEE SOUTH AREA MAP)